

A fairytale inspired adventure for ages 4+

THE (Not So) BIG BAD WOLF



wrong²emble

Following on from the success of *The Not So Ugly Sisters*, and *The Not So Grimm Twins*, the third in our 'Not So' series of re-imagined fairytales is...

THE NOT SO BIG BAD WOLF

"Welcome back Listeners - Little Red Riding Hood here! Stay tuned as I go undercover to reveal the truth behind fairytales' most infamous villain - The Big Bad Wolf"

Meet Little Red; adventurer, heroine and world-renowned "True Grimm" podcaster. She's on a mission to debunk the myths around her so called nemesis, with the help of a few storybook favourites, her red invisibility cloak, and a basket full of music, mayhem and magic tricks!
But the truth is no Fairytale...

Behold as your favourite tales are re-spun and woven together in an epic new adventure from Wrongsemble

During Spring 2024, **The Not So Big Bad Wolf**, performed by two actor-musicians, featuring original live music and puppetry, will tour across the UK

Age Guidance: 4+

**Running time: approx 50 mins
(no interval)**



This production is suitable for the whole family, though some elements may be best enjoyed by those aged 4 and above.



About the Show

Over Summer 2023, **The Not So Big Bad Wolf** toured on 'The Imaginarium', a bespoke travelling stage brimful of surprises to great success at outdoor venues across the country.

During Spring 2024, this magical production will be adapted to tour to indoor venues, retaining all the magic and intrigue of the travelling stage and with some new curiosities too!

Key Features:

- A brand new musical adventure for all the family
- Source material of hugely popular fairytales, offering familiarity to new or less-regular theatre-goers
- Single dates, short runs and longer residencies available
- Marketing copy/asset support, plus company available for press/interviews on request
- Available for outdoor touring for organisations and venues without indoor space*

**additional fee - access to site via vehicle required. Power can be supplied on site or via generator.*

Available for UK wide venue bookings: March - June 2024



Technical

For Indoor Touring:

- End on configuration
- Touring cast and crew: 2 x performers and one stage manager who is able to operate sound.
- Parking spaces for one Transit van
- Lockable dressing room(s) or equivalent where possible.
- Ideal min. playing space : 3m width x 3m depth



Costs

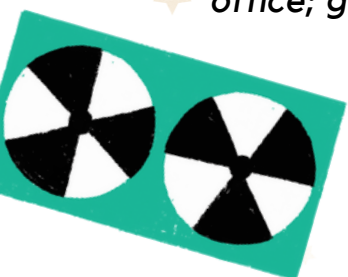
Commutable from Leeds, West Yorkshire:

- 1 or 2 show days in one location - **£900 + VAT***
- *(additional days in same location: £750 + VAT)*

All other regions:

Venues over 100 miles from the company's base in Leeds will be subject to a fuel/accommodation surplus to be agreed at the point of booking.

** Please note that additional supplements may apply if your venue makes compulsory contractual cost to Wrongsemble (e.g. credit card/box office; get-in/out; marketing/brochure contributions).*



About Wrongsemble

Wrongsemble are a Yorkshire based theatre company making exciting family theatre for all ages. In 2020 Wrongsemble won the prestigious Child Friendly Leeds Award for 'Inspiring Creativity through Arts and Culture'.

Previous productions include critically acclaimed national tours and long residencies with: The Not So Ugly Sisters (presented by Leeds Playhouse and Red Ladder), Three (presented by Half Moon Young People's Theatre, Summerhall), Billy Shakes: Wonder Boy! (Shakespeare's Rose Theatre), Peter Pan in the Park (Creative Scene), The Selfish Giant (commissioned by Arc Stockton and Barnsley Civic), and festive musicals The Princess and the Sprout and Hansel & Gretel (Leeds Libraries).

Currently the Resident Company for Leeds-based Slung Low, Wrongsemble's mischievous and exuberant style never fails to provide a feast for the eyes, and productions bursting with joy, positive messaging and catchy original soundtracks. The Not So Grimm Twins, presented on The Imaginarium, raises the bar again to provide outstanding, inclusive, heart-warming entertainment for all the family!



Credit: Lian Furness

What are people saying about our previous shows?



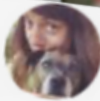
Pavla Beier 🇪🇺 🇬🇧 🇩🇪 🇨🇪 🇰🇪 @pavlabing · 2 Sep

Just saw this @SlungLow and think it's the best one yet! Awesome cast, script constantly makes you chuckle (few belly laughs too!) and wonderfully topsy-turvy story that celebrates and challenges the characters we know so well. I'll never see Rapunzel in the same light again..! 🎭👏



Amy Blake @Amy_Blake_ · Aug 19

Thank you @wrongsemble for an awesome adventure this morning! My little nephew loved it, giggling in all the right places and clapping his little hands like mad at the end. (I loved it too!!) 🐸 🦎 📖 🍷 ❤️ #NotSoGrimm



Jo Mousley @MouseyMousedale · 18 Aug

Saw this gorgeous show today outside Leeds library - It's so much fun - brilliant story - full of incredible songs and three awesomely talented actors - check their website & catch it if you can! 🌟🌟🌟



Tyler Pickles @tylerwpickles · 2 Sep

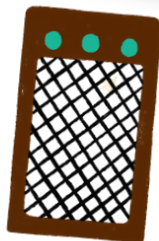
Had the absolute pleasure of watching this today. A Fun, clever, innovative piece of theatre!



Rachel Bowskill Wrongsemble

30 Aug · 🌐

Just wanted to say thank you for taking the time to meet our son after the show yesterday, absolutely made his day. He loved watching the show Saturday, Sunday and Monday and has been acting out scenes and singing the songs since. You were amazing. Thanks again 🥰



Georgie samuels 🌞 @SamuelsGeorgie · 3 Sep

Replying to @wrongsemble

Saw this absolutely brilliant show! Go, go, go! ❤️❤️❤️
incredible 🍌🍌🍌🍌